

# MS702

## Solid Tires – Industrial STR

Standard Solid Tire, multi-compound and nylon reinforced construction for an excellent stability, traction, resistance and smooth running.

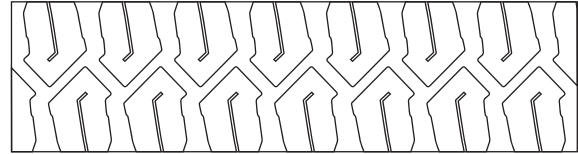


- High traction
- Excellent stability
- Multi-compound, nylon reinforced construction
- Smooth running
- Tough wear & cut resistant tread compound
- Reinforced bead for secure mounting
- Available in both marking and non-marking

### Applications



### Footprint



Size	Rim	Type		Load Capacity (kg) Forklift up to 25 km/h		Unit	Tire Dimensions		
		Standard	Swift	Load Wheels	Steer Wheels		Tread Depth	Section Width	Overall Diameter
4.00-8	3.00D	*	*	950	730	in.	18/32	3.9	15.8
						mm	14	98	402
5.00-8	3.00D	*	*	1415	1090	in.	19/32	4.5	17.7
						mm	15	114	450
15x4.5-8 (125/75-8)	3.00D	*	*	1040	800	in.	15/32	4.2	14.7
						mm	12	106	374
15x4.5-8 (125/75-8)	3.25	*	*	1040	800	in.	15/32	4.2	14.7
						mm	12	106	374
16x6-8 (150/75-8)	4.33R	*	*	1455	1120	in.	15/32	5.5	16.1
						mm	12	139	409
18x7-8 (180/70-8)	4.33R	*	*	2145	1650	in.	17/32	5.7	17.6
						mm	13	146	448
140/55-9	4.00E	*	*	1170	900	in.	13/32	4.8	14.6
						mm	10	122	372
6.00-9	4.00E	*	*	1885	1450	in.	23/32	5.2	20.5
						mm	18	132	520
21x8-9 (200/75-9)	6.00E	*	*	2755	2120	in.	26/32	7.0	20.2
						mm	21	178	514
6.50-10	5.00F	*	*	2340	1800	in.	23/32	6.0	22.3
						mm	18	152	566
23x9-10 (225/75-10)	6.50F	*	*	3445	2650	in.	26/32	7.4	22.6
						mm	21	188	574
200/50-10	6.50F	*	*	2470	1900	in.	19/32	7.2	17.8
						mm	15	183	451



Size	Rim	Type		Load Capacity (kg) Forklift up to 25 km/h		Unit	Tire Dimensions		
		Standard	Swift	Load Wheels	Steer Wheels		Tread Depth	Section Width	Overall Diameter
7.00-12	5.00S	*	*	2920	2240	in.	28/32	6.4	25.4
						mm	22	163	646
27x10-12 (250/75-12)	8.00G	*	*	3900	3000	in.	28/32	9.3	26.4
						mm	22	235	670
7.00-15	5.50	*	*	3545	2725	in.	27/32	6.6	28.3
						mm	21	168	719
7.50-15	5.50	*	*	3900	3000	in.	26/32	7.4	29.4
						mm	21	187	748
7.50-15	6.50	*	*	3900	3000	in.	26/32	7.4	29.4
						mm	21	187	748
28x9-15 (8.15-15) (225/75-15)	7.00	*	*	3900	3000	in.	28/32	8.0	26.9
						mm	22	202	682
8.25-15	5.50	*	*	4530	3485	in.	33/32	7.6	31.7
						mm	26	194	804
8.25-15	6.50	*	*	4750	3650	in.	33/32	7.6	31.7
						mm	26	194	804
250-15 (250/70-15)	7.00	*	*	4640	3570	in.	28/32	8.2	28.0
						mm	22	208	711
250-15 (250/70-15)	7.50	*	*	4640	3570	in.	28/32	8.2	28.0
						mm	22	208	711
300-15 (315/70-15)	8.00	*	*	5850	4500	in.	33/32	9.5	31.8
						mm	26	242	807
350-15 (355/65-15)	9.75	*	*	7800	6000	in.	33/32	11.5	32.0
						mm	26	292	812
10.00-20	7.00	*		6000	5000	in.	40/32	9.8	40.4
						mm	32	250	1025
10.00-20	7.50	*		6000	5000	in.	40/32	9.8	40.4
						mm	32	250	1025
10.00-20	8.00E	*		6000	5000	in.	40/32	9.8	40.4
						mm	32	250	1025
12.00-20	8.00E	*		7650	6300	in.	48/32	10.9	42.7
						mm	38	278	1085
12.00-20	8.50E	*		7650	6300	in.	48/32	10.9	42.7
						mm	38	278	1085
12.00-20	10.00	*		7650	6300	in.	48/32	10.9	42.7
						mm	38	278	1085